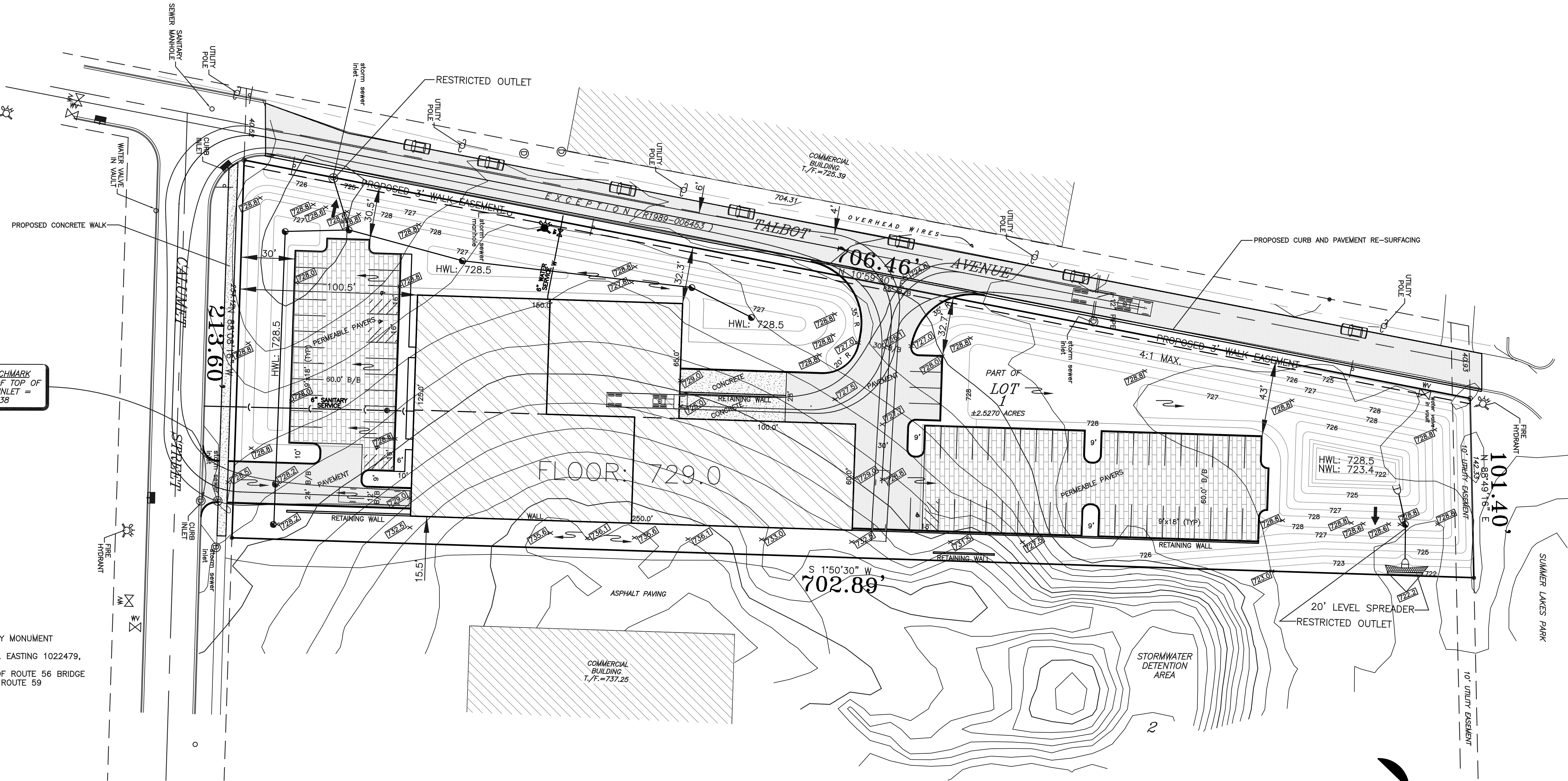


# WVILLE TALBOT CONCEPT PLAN

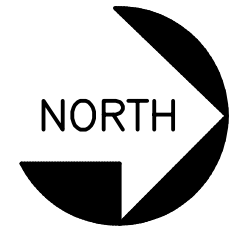
BEFORE YOU DIG!  
**CALL**  
1-800-892-0123  
(Allow Two Working Days)  
**JULIE**  
The Illinois One-Call System  
It's The Law



SITE BENCHMARK  
ELEVATION OF TOP OF CURB @ INLET = 728.38

**REFERENCE BENCHMARK:**

DUPAGE COUNTY GEODETIC SURVEY MONUMENT  
BENCHMARK W134002 RESET  
PID: DP0966, NORTHING 1877110, EASTING 1022479,  
ELEVATION 704.27 NAVD 88  
BRASS TABLET IN SE HEADWALL OF ROUTE 56 BRIDGE  
OVER CREEK 0.5 MILES EAST OF ROUTE 59



SCALE: 1" = 30'

IMPERVIOUS AREA:			
	SOUTH	NORTH	TOTAL
	SF	SF	SF
PROPOSED BUILDING:	12,375	12,375	24,750
PROPOSED PAVEMENT:	3,413	6,970	10,383
PROPOSED PAVERS:	6,805	12,696	19,501
AREA (acres)	0.89	1.64	2.53

DATED: JUNE 10, 2021		ENGINEERED BY: <b>KDC CONSULTANTS INC.</b> WWW.KDCCONSULTANTSINC.COM 16144 S. BELL ROAD HOMER GLEN, ILLINOIS 60491 (708) 645-0545 Fax: 645-0546
REVISION	DATE	
ORIGINAL	06/08/20	
VILLAGE COMMENTS	01/21/21	PREPARED FOR: <b>WVILLE TALBOT LLC</b> 11551 W 184TH PLACE ORLAND PARK, ILLINOIS 60467 (708) 995-1727 FAX 995-7320
VILLAGE COMMENTS	01/26/21	
VILLAGE COMMENTS	03/12/21	
VILLAGE COMMENTS	06/10/21	
PROJECT 20-05-062 CP		PAGE 1 OF 1